

**3 WEEKS
AT
ACCENT
FRANÇAIS
MONTPELLIER**



FOCUS ON SUSTAINABLE DEVELOPMENT

With its long and proud tradition of science and higher learning, Montpellier is internationally renowned for research in the fields of health, agronomy, and the environment. It is also the birthplace of modern medicine.



2, rue de Verdun
34000 MONTPELLIER
tel. +33 (0) 467 581 268
www.accentfrancais.com
contact@accentfrancais.com

Today, Montpellier is France's leader in research on new agricultural models and environmental management, among other areas. The cities universities and research facilities offer numerous grants and scholarships to international students at the master's, doctoral, and postdoctoral levels.

By bringing together in a single program **innovators, entrepreneurs, scientists, educators, and researchers**, Accent Français and Campus France are leveraging this scientific dynamic to give international stu-

dents—France's future informal ambassadors—an appreciation of French technological know-how.

This three weeks program on environmental themes enables participants to:

- > Engage in group discussions of problems and issues confronting scientists and engineers;
- > Reflect individually on potential careers in cutting-edge companies and on the education and training programs most likely to jump start those careers.



.....
An important part of the program consists of site visits innovative enterprises active within a scientific and economic community that shares dreams, aspirations, and motivations:

- > To meet the important challenges of the 21st century in ways consistent with the objectives of sustainable development and the Paris agreement on climate change ;
- > To promote innovative agricultural methods and practices that deploy research, education, and training to ensure food security and environmental quality for a global population projected to number 9 billion people by 2050, to manage our natural resources in a sustainable way, to cure chronic and emerging diseases, and to make the transition to societies that are respectful of the environment.



COURSE CONTENT

30 HOURS PER WEEK

- **French as a foreign language: 15 hours per week**
 - Acquisition and reinforcement of linguistic, communicational, and intercultural foundations ;
 - acquisition and reinforcement of grammar and syntax ;
 - practice in written and oral communication.
- **Science and technology module: 15 hours per week**
 - A Campus France exclusive + thematic visits.
- **Thematic conferences**

Students deepen their knowledge through presentations by experts from the corporate world (including heads of small and medium-sized firms).

*Non-contractual program, subject to change.
 A minimum of 10 students is required.*



Duration
3 WEEKS



Location
MONTPELLIER

PERIOD: March, July, September, October

French ⊕ Sciences & University housing
€2,000

French ⊕ Sciences & Host family
€2,100

French ⊕ Sciences & Private apartment
€2,200

3 WEEKS AT ACCENT FRANÇAIS MONTPELLIER



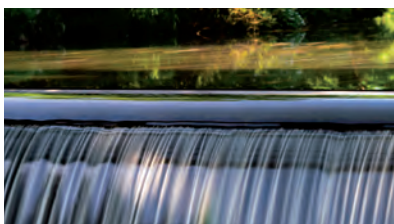
© Pixabay, makunn



© Pixabay, hgruesen



© Pixabay, Seagull

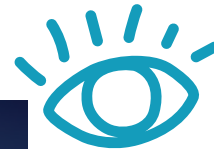


© Pixabay, Lars Nissen/Photo ART



2, rue de Verdun
34000 MONTPELLIER
tel. +33 (0) 467 581 268
www.accentfrancais.com
contact@accentfrancais.com

WEEK 1



© Pixabay, envelise

MONDAY

- > Morning French course
- > Afternoon Montpellier tour

Montpellier is voted #1 city in France for its quality of life with 300 days of sunshine per year! This is the place to be to discover historical treasures of the Occitanie.

TUESDAY

- > Morning French course
- > Afternoon Visit

Generation of electricity from renewable sources: visit to a wind farm (Port la Nouvelle, Aude) or hydroelectric plant (near Vigan, Gard)



© Pixabay, Peredrautz

WEDNESDAY

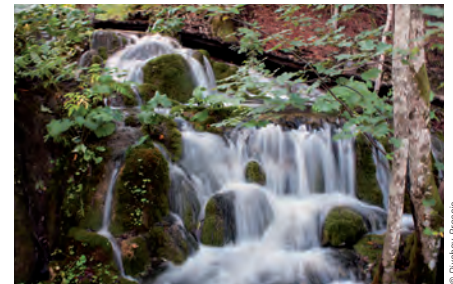
- > Morning French course
- > Afternoon Interactive conference and workshop: Renewable energy

Presenter: **Guillaume Marcenac, founder, Enercoop.** Mr. Marcenac is a specialized engineer and director of production for **Enercoop, a provider of electricity generated entirely from renewable sources.**

Content: Theoretical and scientific basics of energy; uses of energy; French electricity networks, markets, and providers; other energy networks; energy transition forecasts and scenarios.

THURSDAY

- > Morning French course



© Pixabay, Boresis

- > Afternoon Visit

Ecological engineering: visit to Biotope, where ecology is a key part of the environmental approach to land management (Méze)

FRIDAY

- > Morning French course
- > Afternoon Drafting of the weekly

logbook of the student, followed by a progress report with a teacher-tutor of the school.

SATURDAY

- > All day Excursion to Saint-Guilhem le Désert and Lac du Salagou

Visit of one of the most beautiful villages of France! Stroll through the narrow streets of the village and discovery of the abbey. Let yourself be amazed by the Salagou lake, known for its special red lands!



© Pixabay, tm266

WEEK 2

MONDAY

- > Morning French course
- > Afternoon Visit

Climate change and ecosystems: visit to ECOTRON experimental facility for the study of the effect of climate change on ecosystems with Jacques Roy, a CNRS research director.

TUESDAY

- > Morning French course
- > Afternoon Conference: How do I actually affect the environment?



© Pixabay, Bernhard Stærck

Presenter: **Carole Sinfort, research professor at Montpellier SupAgro** and a specialist in pesticides and life-cycle analysis
Content: Methods of environmental evaluation; the principle behind the ACV method; examples; discussion.

WEDNESDAY

- > Morning French course
- > Afternoon Ideas Debate

The students, guided by their teacher-tutor, will develop their personal reflection and argue their point of view.



© Pixabay, esul

THURSDAY

- > Morning French course
- > Afternoon Visit
Pesticide research



© Pixabay, Lars Nissen Photo Art

Visit to a pesticide research center in Agropolis with **Carole Sinfort, research professor at Montpellier SupAgro** and a specialist in pesticides and life-cycle analysis. www.irstea.fr/innovation/equipements-et-plateformes/plateau-reducpol-montpellier

FRIDAY

- > Morning French course
- > Afternoon Drafting of the weekly logbook of the student, followed by a progress report with a teacher-tutor of the school.

SATURDAY

- > All day Excursion to Arles et Saintes Maries de la Mer

Discovery of this beautiful city listed as UNESCO World Heritage! You will appreciate the old streets and architectures of this city of Ancient Rome. Discover the village of Saintes Maries de la Mer and its legendary church, built between sky and sea and the territory of the Camargue.



© Pixabay, Hens



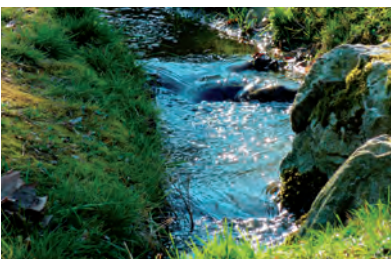
WEEK 3

MONDAY

- > Morning French course
- > Afternoon Biodiversity: visit to Villeneuve saltmarsh. www.cenlr.org/gerer/sites/salines



© Pixabay, amca



© Pixabay, moontz320

TUESDAY

- > Morning French course
- > Afternoon Conference - Water, the new ecological challenge:

combatting pollution and protecting aquatic environments

Presenter: **Jean-Luc Rivière, coordinator of community relations, Agence de l'Eau Rhône Méditerranée Corse**

Content: Adaptation to climate change; the "de-waterproofing" of soils; conserving water; preserving wetlands etc. Introduction to professional competencies in water and energy; critical analysis of policies in these areas and prospects for the future.

WEDNESDAY

- > Morning French course
- > Afternoon Conference
At the crossroads of nature and advanced technology

Presenter: **Emmanuel Petiot, managing director, DEINOVE, Grabels**

Content: Reconciling biology and technology in health (new antibiotics) and food(replacing petrosourced with biosourced substances, natural colorants, nutritional supplements, etc.)

THURSDAY

- > Morning French course
- > Afternoon Visit
Waste recycling:

Visit to the MAERA purification plant in Lattes or the AMETYST methanation site in Baillargues



© Pixabay, orenstener

FRIDAY

- > Morning French course
- > Afternoon

Finalization of the weekly logbook of the student. End-of-course report with a teacher-tutor from the school.

SATURDAY

- > Home-coming